



Riley 17



4



2



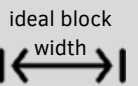
2



1



172m²
(18sq)



ideal block
width
10m

Inclusions Highlights

Kitchen

- ◆ Premium Branded Appliances
- ◆ Ceasarstone Benchtop
- ◆ Soft close Drawers & Doors
- ◆ Caroma Tapware

Bathroom

- ◆ Semi-frameless shower screens
- ◆ Caroma Tapware
- ◆ Back to Wall Toilet Suite
- ◆ Ceasarstone Vanity Tops

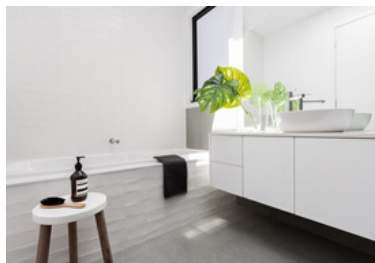
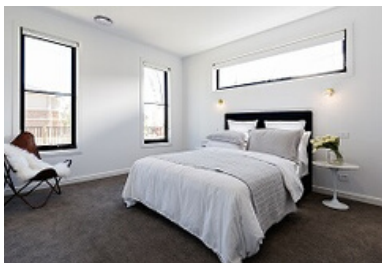
General

- ◆ Tiles to Living & Porch
- ◆ Premium Carpet to Bedrooms
- ◆ Taubmans 3 Coat Paint System
- ◆ Ducted Air Conditioning

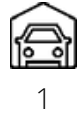
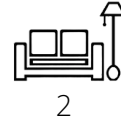
Refer to Inclusions List or Tender for more detail

Home Highlights

- ◆ Fully featured, spacious 4 bedroom home
- ◆ Bedrooms located in opposite ends of the home to maximise privacy
- ◆ Open plan design with light-filled Kitchen, Dining & Family rooms
- ◆ Modern Kitchen layout with double pantry
- ◆ Option to add Alfresco to the rear or convert Bed 2 into a Study or Home Office
- ◆ Suits all standard blocks with a 10m frontage
- ◆ Packed with heaps of upgraded inclusions



Riley 17



MAKE YOUR CUSTOMISATIONS

Facade Options



Lancia Facade



Hampton Facade

Contact Details

Andrew Wong

0401 695 625

andrew@ashmonthomes.com.au

www.ashmonthomes.com.au

Photographs, artist impressions and other pictures shown on this flyer are for illustrative purposes only and may show fixtures, fittings or finishes which are outside the available packages which are not supplied by Ashmont Homes. This may include façade, landscaping and outdoor items, render, floor coverings, doors, furniture, kitchen, bathroom and light fittings and decorative items, which are shown as examples only. Please refer to your Tender for specific details of the inclusions and exclusions. The pricing information made available on this brochure was accurate at the time of printing and may not reflect the current or 'real time' price of the stock or its availability. Please speak to an Ashmont Homes Consultant to discuss detailed home pricing for different designs, inclusions and collections. Copyright Ashmont Homes 2020