



Ballina Facade

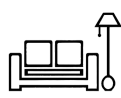
## Hamelin 336



5



3



3



2



11.0m



20.5m

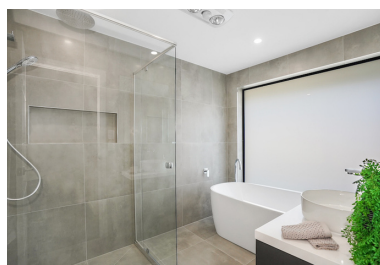


336m<sup>2</sup>  
(36.2sq)

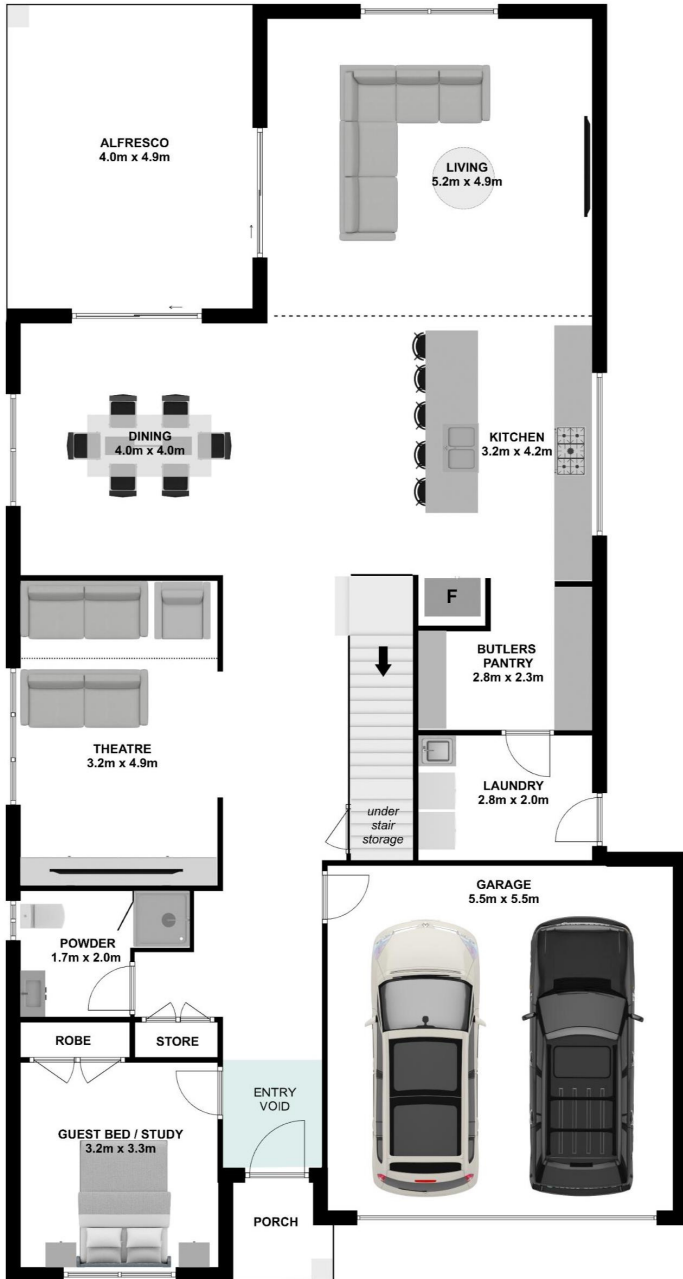
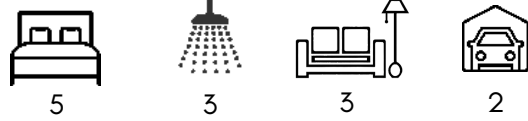
## Design Highlights

- Grand & Luxurious 5 bedroom home with 3 large Living Rooms, 3 Bathrooms and a Double Garage.
- The Entry Void is a standout feature of this home, creating a sense of space as you enter the home.
- The 5th bedroom privately located at the front of the home, perfect for guests or the grandparents.
- Spacious Kitchen with a 3m Island Bench and a large Butler's Party for all your storage needs
- The living zones of this home is Open Plan Living in its truest form.
- Generous Upper Living with a Study Nook
- Deluxe Master Suite, Walk in Robe and Ensuite
- All bedrooms are well proportioned with wardrobe storage
- Heaps of storage throughout the home

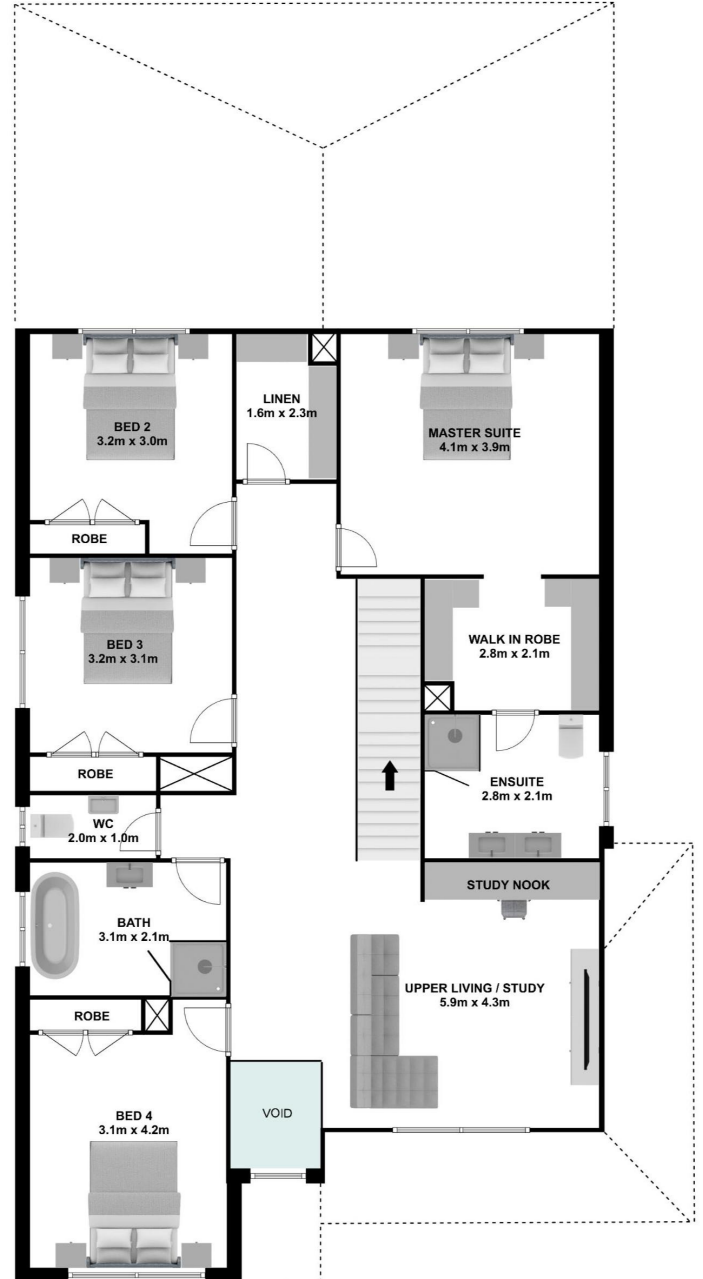
Suits all standard, wider blocks with frontage of 12.5m+ (zero lot)



# Hamelin 336



**GROUND FLOOR**



**FIRST FLOOR**

[www.ashmonthomes.com.au](http://www.ashmonthomes.com.au)

**ASHMONT HOMES**

Suite 1103, 31 Lasso Rd  
Gregory Hills NSW 2557

t| 02 8328 1388

e| [hello@ashmonthomes.com.au](mailto:hello@ashmonthomes.com.au)

Photographs, artist impressions and other pictures shown on this flyer are for illustrative purposes only and may show fixtures, fittings or finishes which are outside the available packages which are not supplied by Ashmont Homes. This may include façade, landscaping and outdoor items, render, floor coverings, doors, furniture, kitchen, bathroom and light fittings and decorative items, which are shown as examples only. Please refer to your Tender for specific details of the inclusions and exclusions. Please speak to an Ashmont Homes Consultant to discuss detailed home pricing for different designs, inclusions and collections. Copyright Ashmont Homes 2022