



Grange Facade

Lucas 208



4



2



2



1.5



8.1m



15.1m

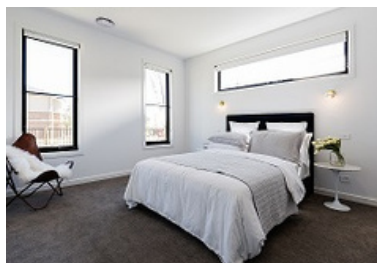
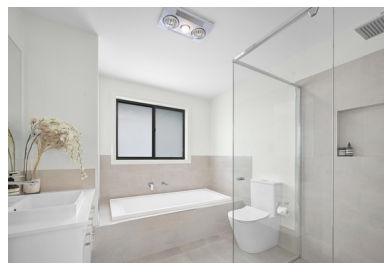
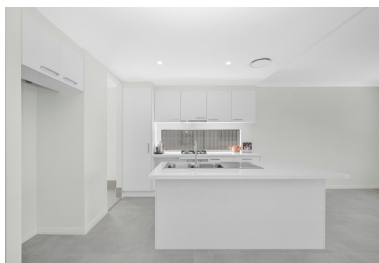


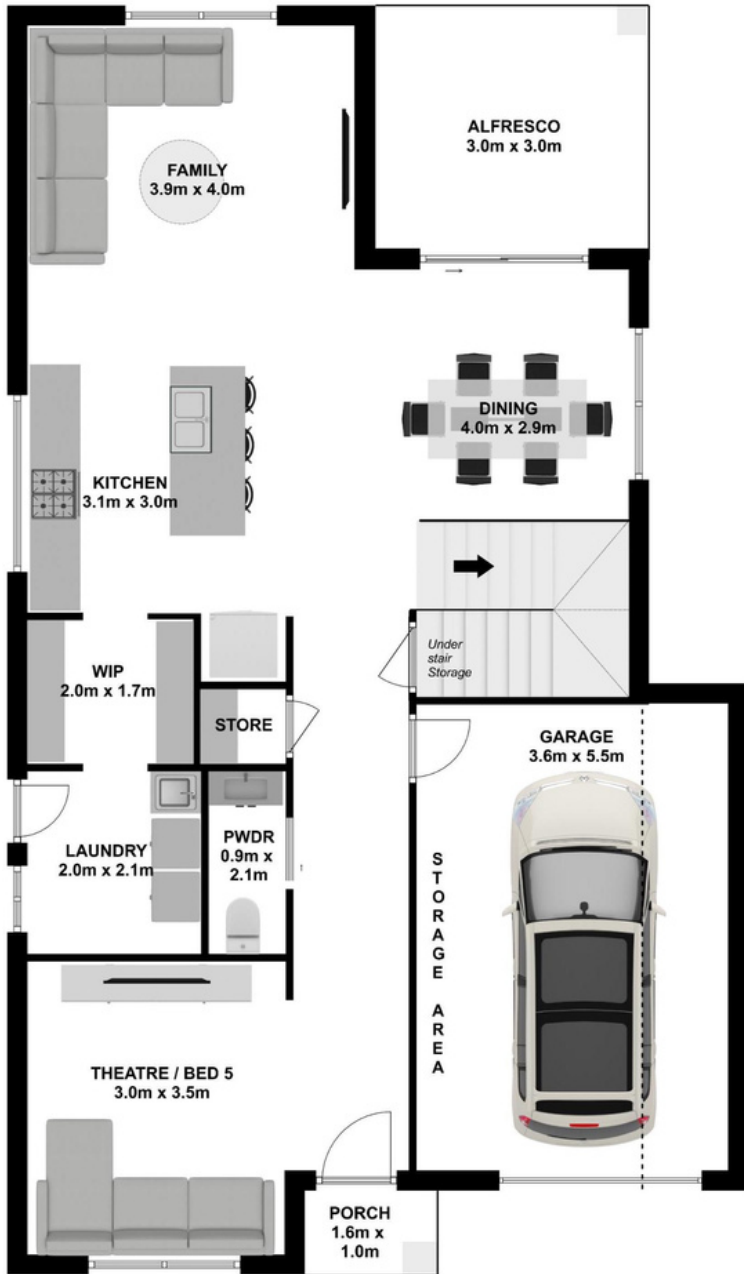
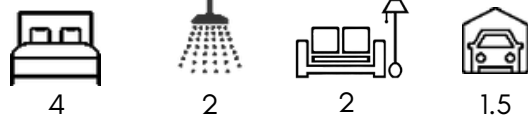
208m²
(22.4sq)

Design Highlights

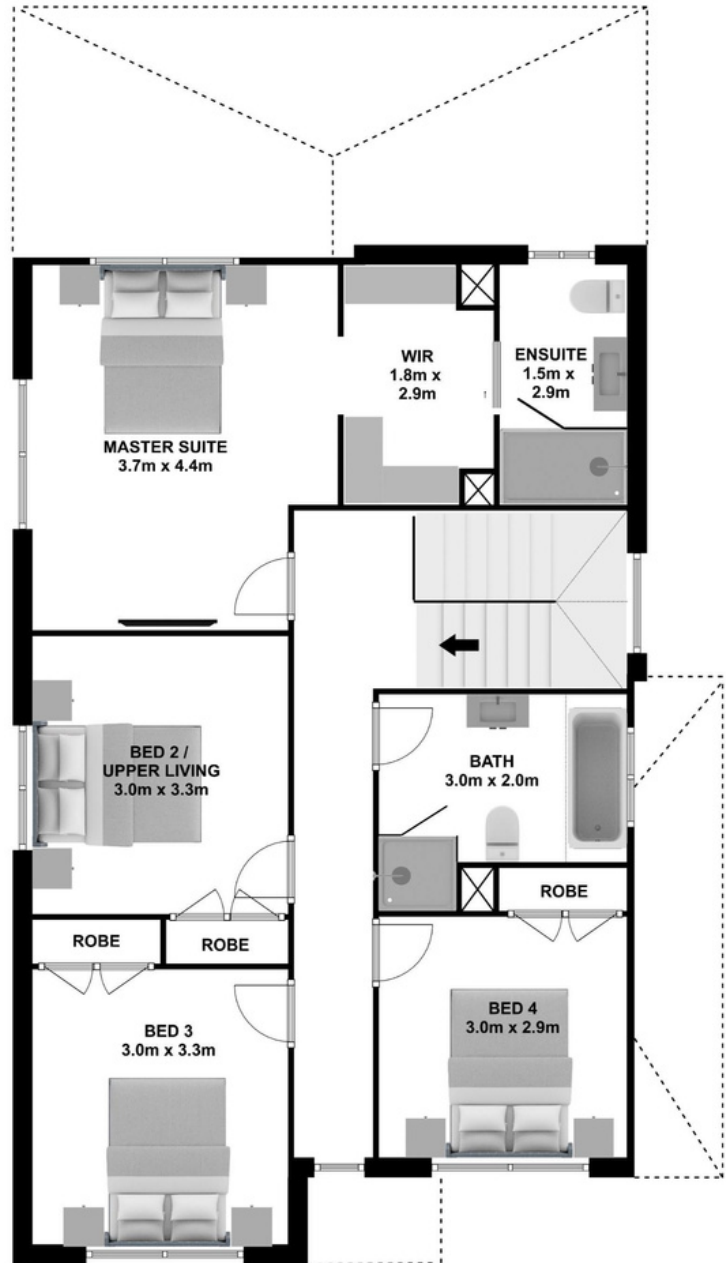
- Seamless connection of Kitchen, Family, Dining & Alfresco, highlighting open plan living
- Modern kitchen with large Walk in Pantry
- Integrated Alfresco
- Oversized garage, perfect for your additional storage needs
- Luxe Master Suite with generous Walk in Robe & Ensuite
- Comfortably sized bedrooms with built in wardrobe storage
- Versatile design with options to locate your bedrooms or living rooms where you choose

Suits all standard blocks with frontage of 9.5m+ (zero lot)





GROUND FLOOR



FIRST FLOOR

www.ashmonthomes.com.au