



Sydney Facade

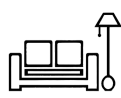
## Oakwood 280



5



3



3



2



10.4m



18.1m

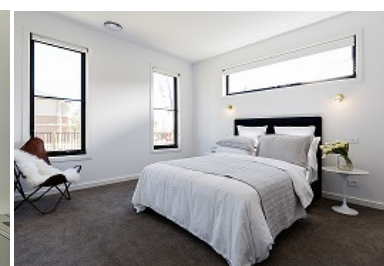
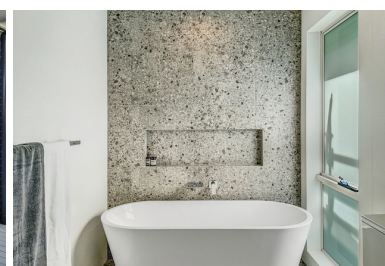


280m<sup>2</sup>  
(30.1sq)

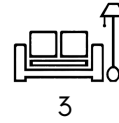
## Design Highlights

- The 5 bedroom home is one of our signature designs boasting 5 bedrooms, 3 bathrooms, 3 Living and a Double Garage
- Privately positioned 5th bedroom on the Ground Floor, ideal for guests or for the grandparents
- Open plan Kitchen, Dining & Family rooms that connect seamlessly to the Alfresco and Theatre Room
- Chef's Kitchen with a large Walk In Pantry that leads to the Laundry
- Elegant Master Suite with a generously sized Walk in Robe and Ensuite
- Light-filled Upper Living with streetscape views from the Balcony
- Generously sized bedrooms, all with large wardrobe storage
- Heaps more storage throughout the home

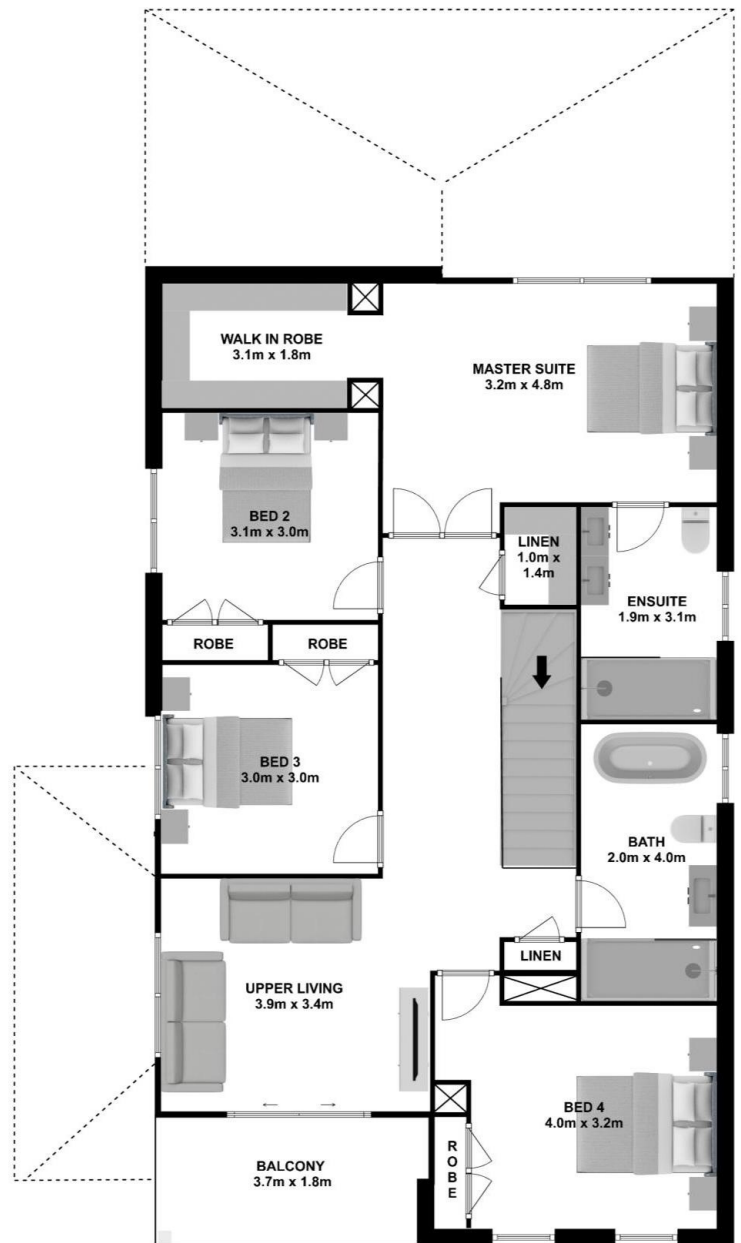
Suits all standard blocks with frontage of 12.5m+ (zero lot)



# Oakwood 280



**GROUND FLOOR**



**FIRST FLOOR**

[www.ashmonthomes.com.au](http://www.ashmonthomes.com.au)

**ASHMONT HOMES**

Suite 1103, 31 Lasso Rd  
Gregory Hills NSW 2557

t| 02 8328 1388

e| [hello@ashmonthomes.com.au](mailto:hello@ashmonthomes.com.au)

Photographs, artist impressions and other pictures shown on this flyer are for illustrative purposes only and may show fixtures, fittings or finishes which are outside the available packages which are not supplied by Ashmont Homes. This may include façade, landscaping and outdoor items, render, floor coverings, doors, furniture, kitchen, bathroom and light fittings and decorative items, which are shown as examples only. Please refer to your Tender for specific details of the inclusions and exclusions. Please speak to an Ashmont Homes Consultant to discuss detailed home pricing for different designs, inclusions and collections. Copyright Ashmont Homes 2022