



Moderna Facade

## Callaway 311



5



3



2



2



12.6m



17.4m



311m<sup>2</sup>  
(33.5sq)

## Design Highlights

- This is a very spacious home with huge open plan living rooms, ideal for entertaining.
- The 5th bedroom privately located at the front of the home, perfect for guests or the grandparents.
- Deluxe Kitchen with Island Bench and a large Butler's Panty for all your storage needs
- Mud Room leading from the garage with direct access to the kitchen.
- Uniquely positioned Upper Theatre Room as you reach the top of the stairs
- Generously sized Office or Study that could also be used as a Kids Retreat
- All 3 kid's bedrooms are clustered at the rear of the home, with a privately positioned Master Suite at the opposite end.
- Luxurious Master Suite with separate His & Her Walk in Robes

Suits all standard, wider blocks with frontage of 14.5m+



# Callaway 311



5



3



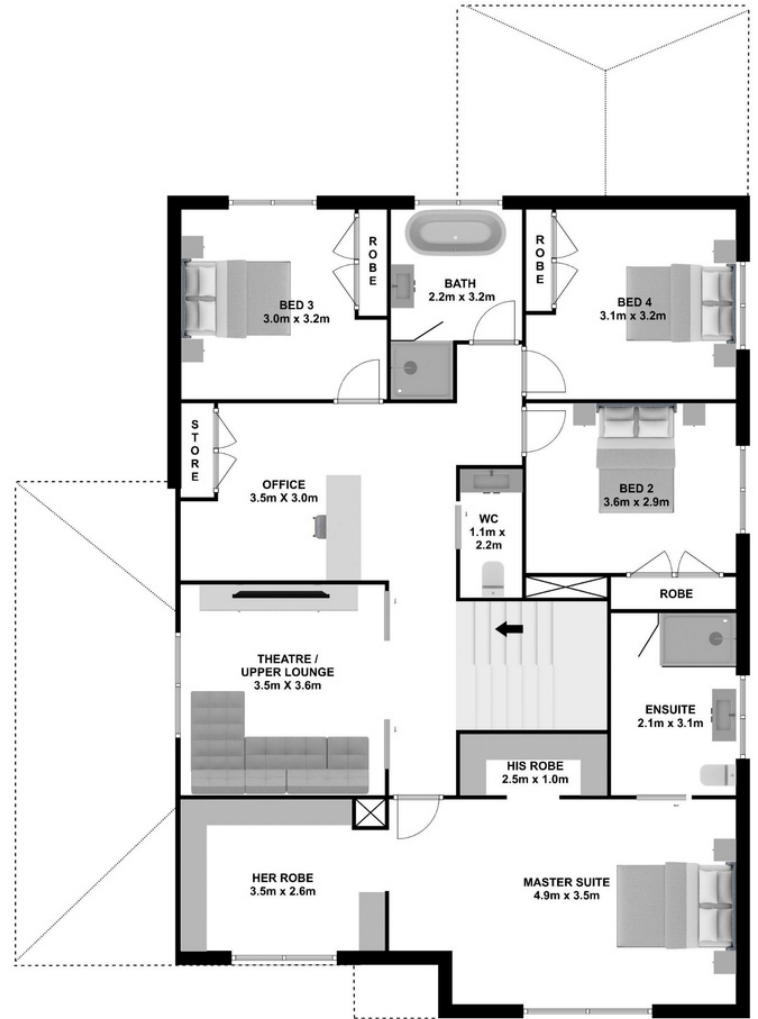
2



2



**GROUND FLOOR**



**FIRST FLOOR**

[www.ashmonthomes.com.au](http://www.ashmonthomes.com.au)

**ASHMONT HOMES**

Suite 1103, 31 Lasso Rd  
Gregory Hills NSW 2557

t| 02 8328 1388

e| [hello@ashmonthomes.com.au](mailto:hello@ashmonthomes.com.au)

Photographs, artist impressions and other pictures shown on this flyer are for illustrative purposes only and may show fixtures, fittings or finishes which are outside the available packages which are not supplied by Ashmont Homes. This may include façade, landscaping and outdoor items, render, floor coverings, doors, furniture, kitchen, bathroom and light fittings and decorative items, which are shown as examples only. Please refer to your Tender for specific details of the inclusions and exclusions. Please speak to an Ashmont Homes Consultant to discuss detailed home pricing for different designs, inclusions and collections. Copyright Ashmont Homes 2022