



Elm Facade

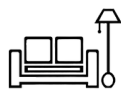
Elm 370



5



4



1



2



13.5m



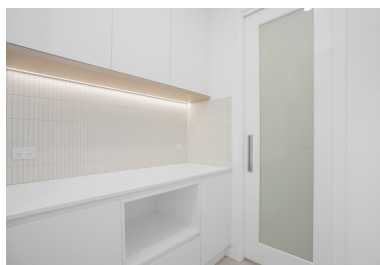
19.0m



370m²
(40sq)

Design Highlights

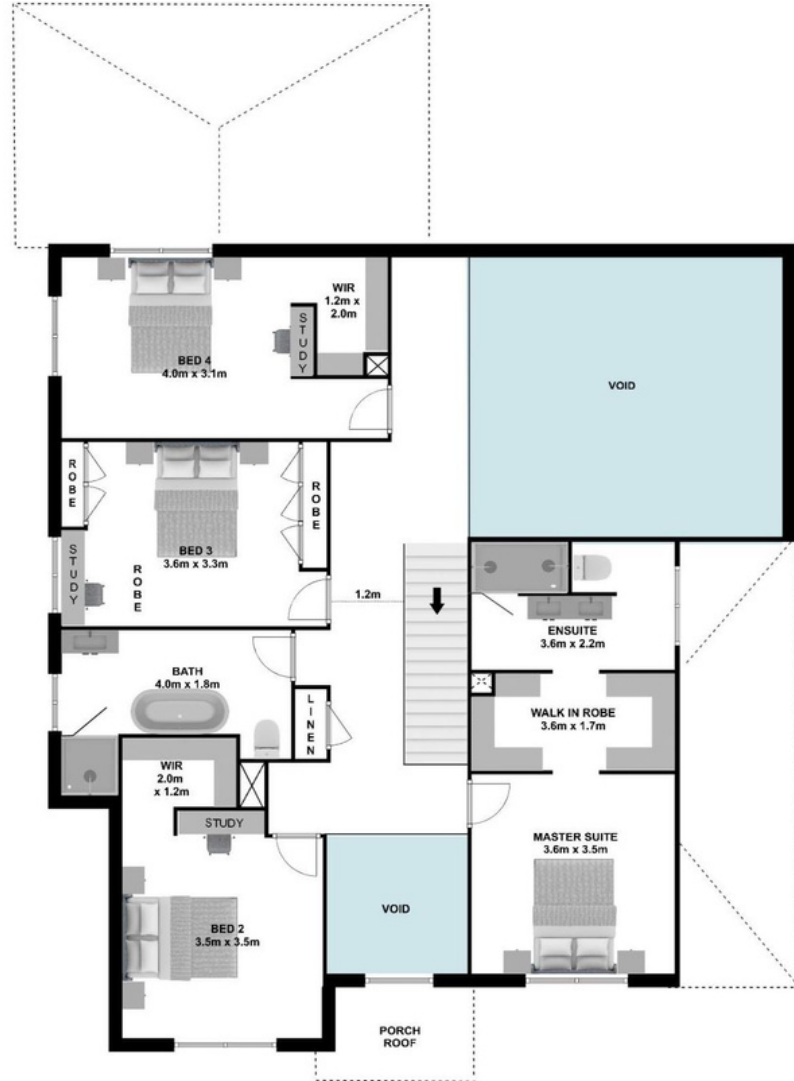
- Perfectly proportioned, this 5-bedroom home offers ample space for a growing family.
- The family room is a standout feature, boasting a breathtaking void that adds a touch of grandeur to the space.
- The deluxe kitchen is equipped with an island bench and an oversized butler's pantry, providing ample storage and workspace
- Each of the bedrooms is well proportioned and comes with ample wardrobe storage
- The luxurious master suite is a true highlight, featuring separate his and her walk-in robes and a spacious ensuite.
- Additionally, there is a convenient storage area located in the garage.



Elm 370



GROUND FLOOR



FIRST FLOOR

www.ashmonthomes.com.au