



Kingston Facade

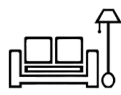
## Kingston 300



5



3



3



2



12m



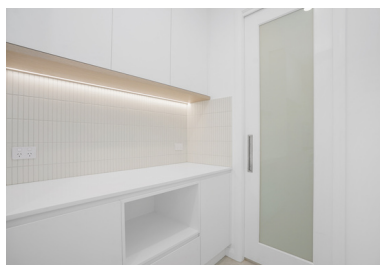
18m



300m<sup>2</sup>  
(32.3sq)

## Design Highlights

- Impeccably designed spacious 5-bedroom home
- The kitchen is deluxe, complete with an island bench and a generously sized butler's pantry.
- The deluxe kitchen is equipped with an island bench and an oversized butler's pantry, providing ample storage and workspace
- All bedrooms boast ample proportions and offer generous wardrobe storage.
- The master suite is a luxurious retreat, featuring separate walk-in robes for both him and her, as well as a spacious ensuite.
- Convenient storage area conveniently situated in the garage.



# Kingston 300



5



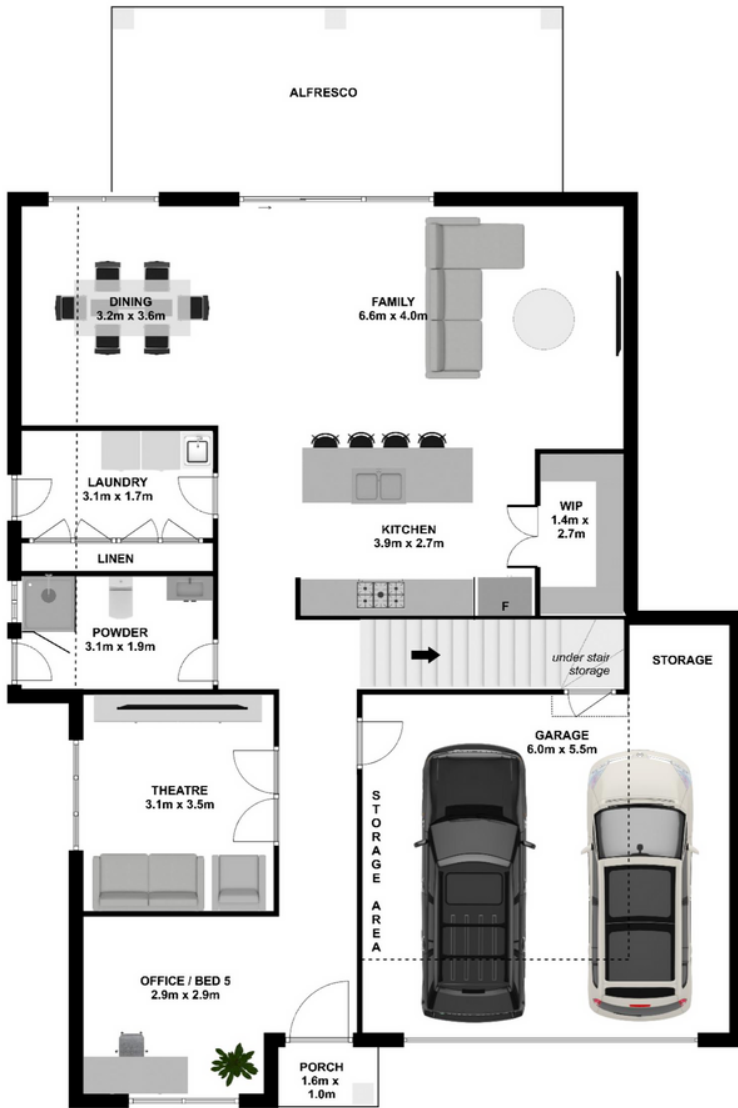
3



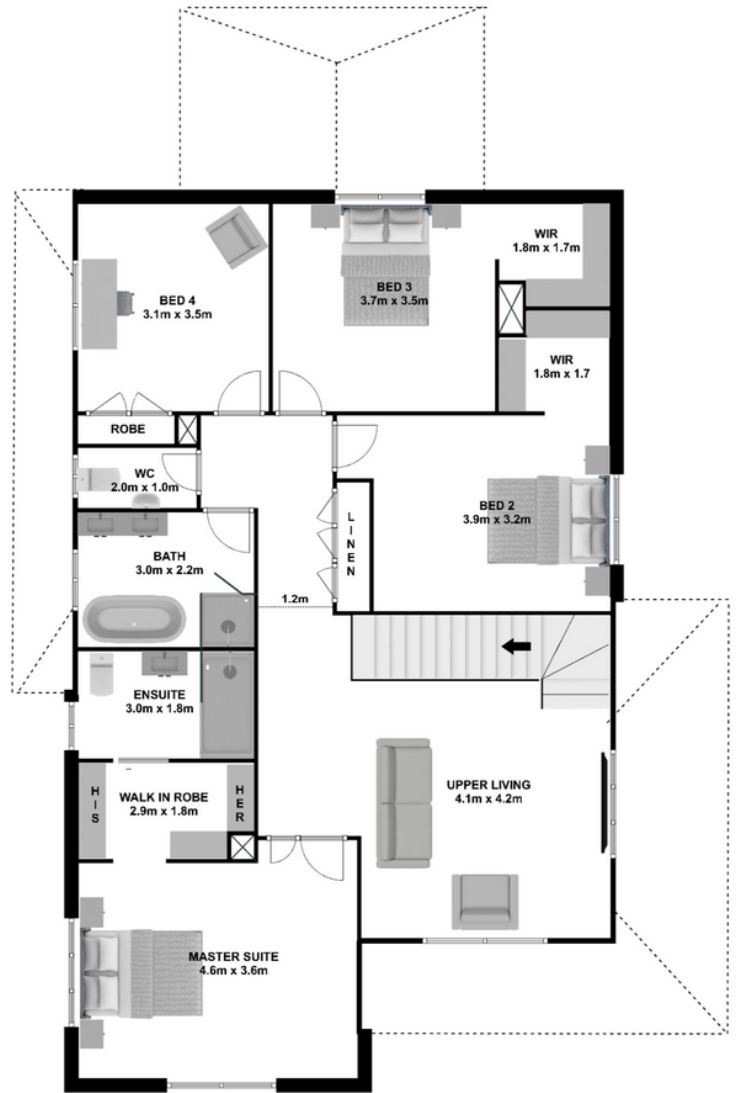
3



2



**GROUND FLOOR**



**FIRST FLOOR**

[www.ashmonthomes.com.au](http://www.ashmonthomes.com.au)

**ASHMONT HOMES**

Suite 1103, 31 Lasso Rd  
Gregory Hills NSW 2557  
t| 02 8328 1388

e| [hello@ashmonthomes.com.au](mailto:hello@ashmonthomes.com.au)

Photographs, artist impressions and other pictures shown on this flyer are for illustrative purposes only and may show fixtures, fittings or finishes which are outside the available packages which are not supplied by Ashmont Homes. This may include façade, landscaping and outdoor items, render, floor coverings, doors, furniture, kitchen, bathroom and light fittings and decorative items, which are shown as examples only. Please refer to your Tender for specific details of the inclusions and exclusions. Please speak to an Ashmont Homes Consultant to discuss detailed home pricing for different designs, inclusions and collections. Copyright Ashmont Homes 2022