



Lennox Facade

## Lennox 303



4



3



3



2



11.2m



19.2m



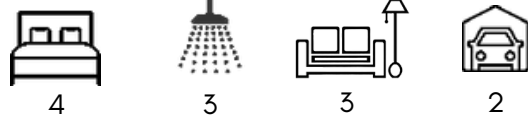
300m<sup>2</sup>  
(32.3sq)

## Design Highlights

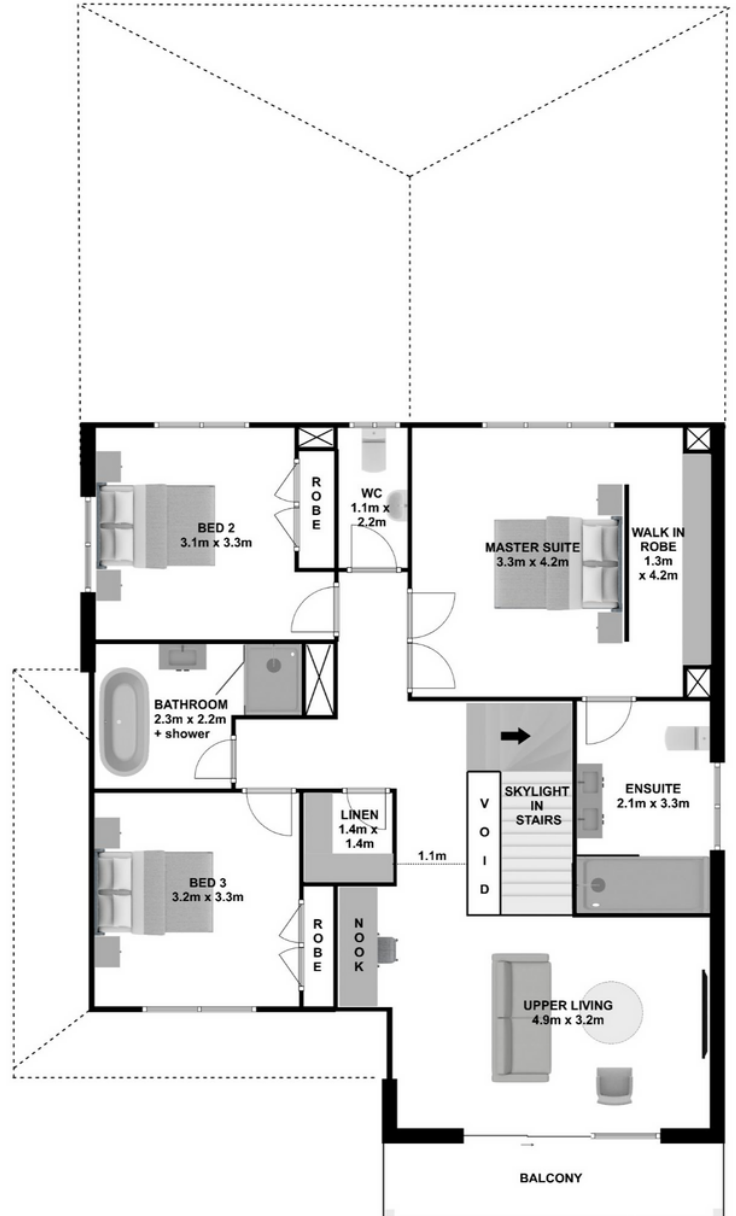
- Exquisitely crafted, this 4-bedroom Home
- A well-appointed kitchen showcases an island bench and a generously sized butler's pantry, ensuring plenty of storage and workspace
- All bedrooms are generously sized and come with ample wardrobe storage.
- The master suite is a luxurious retreat, complete with a separate walk-in robe and a spacious ensuite.
- Additionally, there is a convenient storage area located in the garage.



# Lennox 303



**GROUND FLOOR**



**FIRST FLOOR**

[www.ashmonthomes.com.au](http://www.ashmonthomes.com.au)

**ASHMONT HOMES**

Suite 1103, 31 Lasso Rd  
Gregory Hills NSW 2557  
t| 02 8328 1388

e| [hello@ashmonthomes.com.au](mailto:hello@ashmonthomes.com.au)

Photographs, artist impressions and other pictures shown on this flyer are for illustrative purposes only and may show fixtures, fittings or finishes which are outside the available packages which are not supplied by Ashmont Homes. This may include façade, landscaping and outdoor items, render, floor coverings, doors, furniture, kitchen, bathroom and light fittings and decorative items, which are shown as examples only. Please refer to your Tender for specific details of the inclusions and exclusions. Please speak to an Ashmont Homes Consultant to discuss detailed home pricing for different designs, inclusions and collections. Copyright Ashmont Homes 2022