



Marlow Facade

Marlow 268



3



3



3



1



9.2m



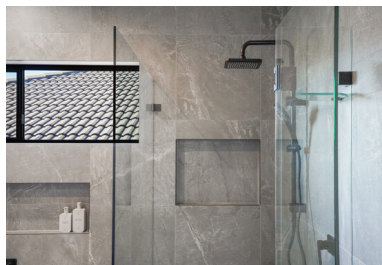
19.2m



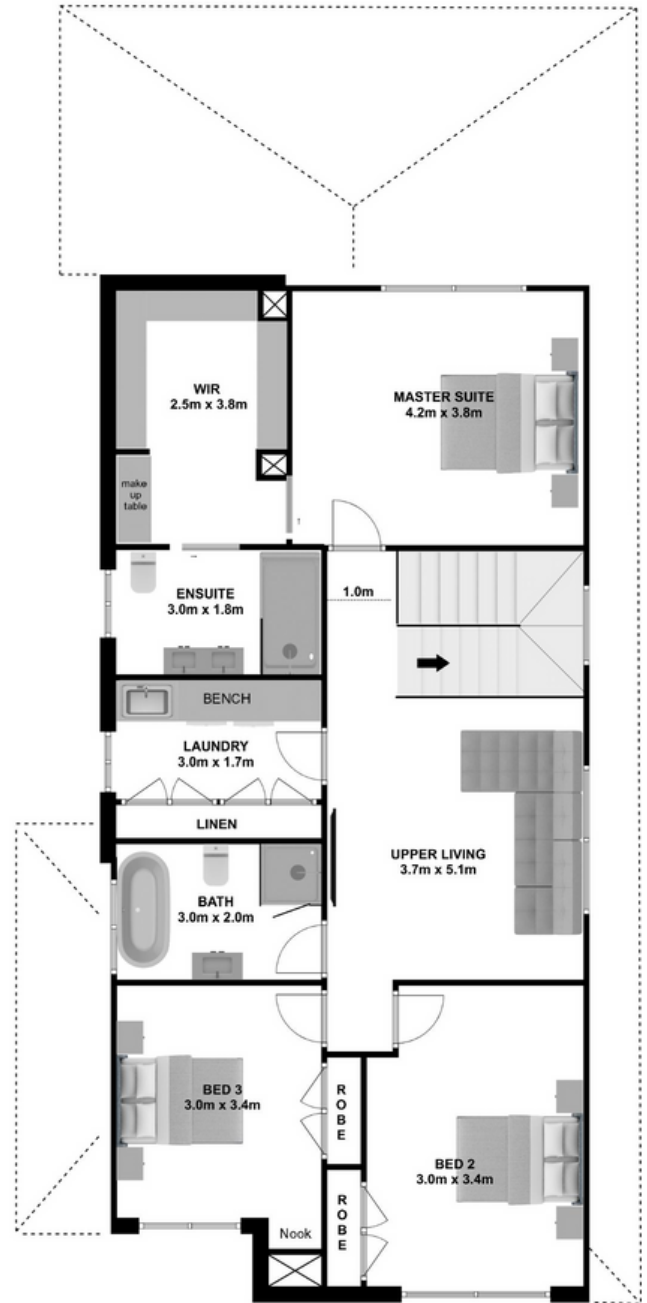
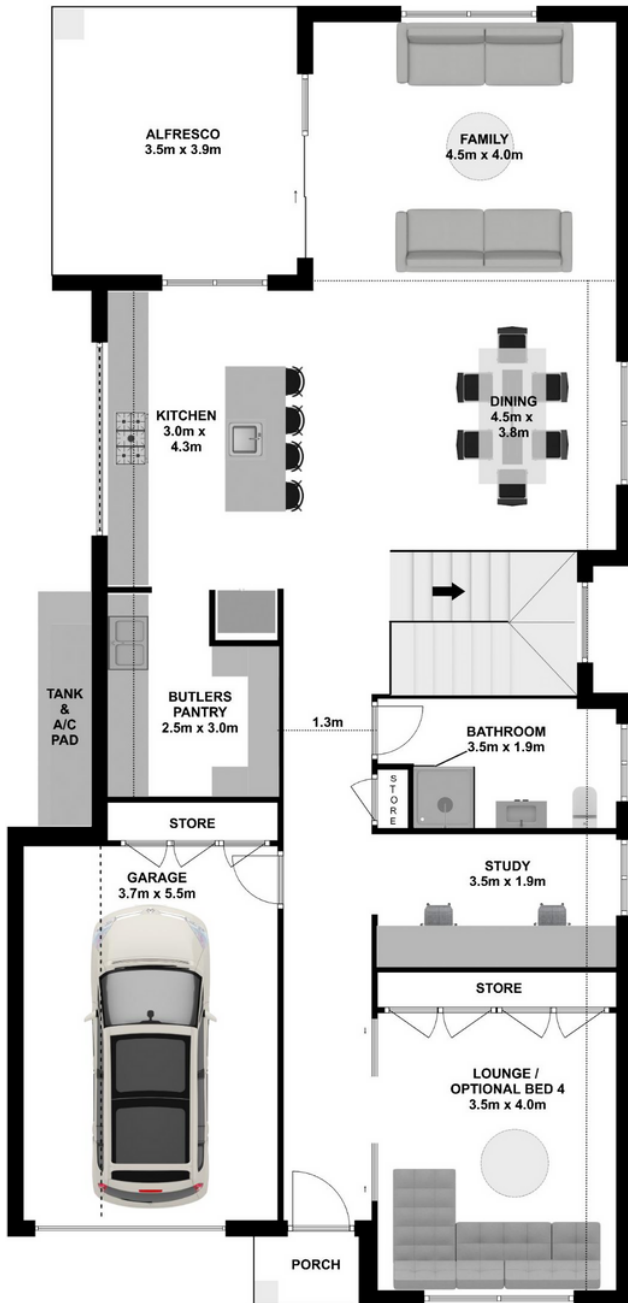
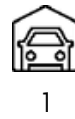
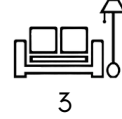
268m²
(29sq)

Design Highlights

- This perfectly proportioned 4 bedroom home is a great fit for any 12.5m frontage block
- Lounge at front of home that can be converted to 4th Bedroom if needed
- Deluxe Kitchen with Island Bench and a large Butler's Panty for all your storage needs
- Spacious upper living area.
- Generously sized Office or Study that could also be used as a Kids Retreat
- All bedrooms are well proportioned with wardrobe storage
- Luxurious Master Suite with separate His & Her Walk in Robes and large Ensuite.



Marlow 268



www.ashmonthomes.com.au

ASHMONT HOMES

Suite 1103, 31 Lasso Rd
Gregory Hills NSW 2557

t| 02 8328 1388

e| hello@ashmonthomes.com.au

Photographs, artist impressions and other pictures shown on this flyer are for illustrative purposes only and may show fixtures, fittings or finishes which are outside the available packages which are not supplied by Ashmont Homes. This may include façade, landscaping and outdoor items, render, floor coverings, doors, furniture, kitchen, bathroom and light fittings and decorative items, which are shown as examples only. Please refer to your Tender for specific details of the inclusions and exclusions. Please speak to an Ashmont Homes Consultant to discuss detailed home pricing for different designs, inclusions and collections. Copyright Ashmont Homes 2022